

# TUUCI

## mercury lounge assembly instructions

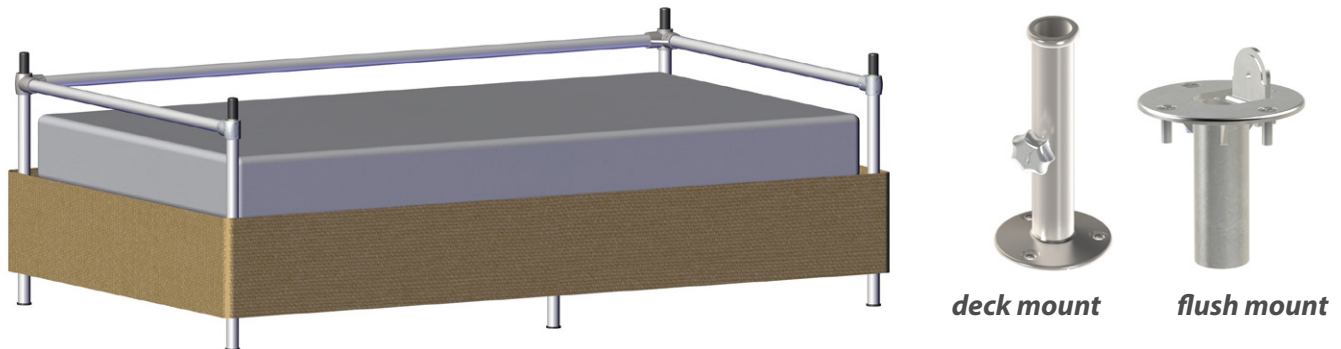


global mission control

2900 NW 35th Street, Miami, FL 33142 USA / 305.634.5116  
info@tuuci.com

## base placement

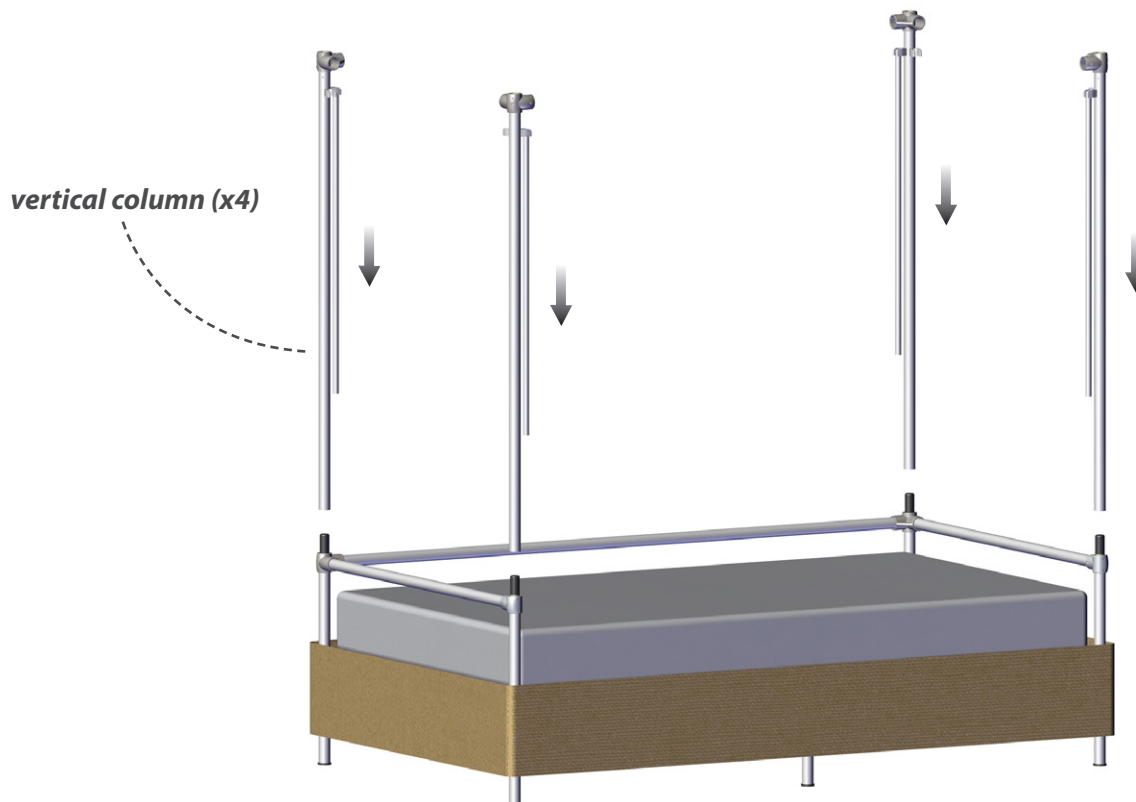
Before assembling and installing top frame and canopy, secure bottom frame to the bases.  
If using deck mounts or flush mounts  
inquire at: [www.tuuci.com/collections/bases/](http://www.tuuci.com/collections/bases/) (PDF downloads instructions)



## upper frame installation

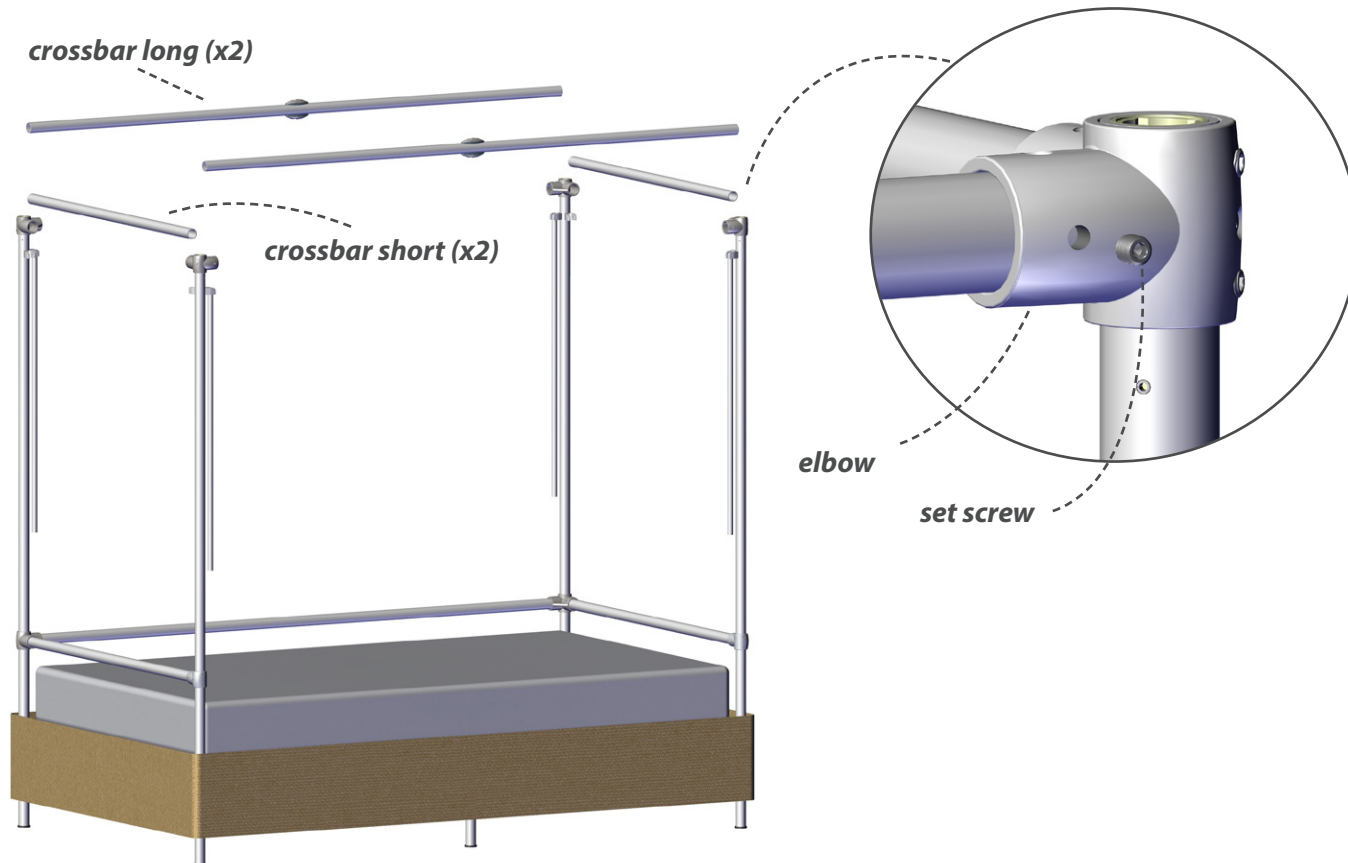
### Step 1

Insert vertical columns, do not tighten screws until upper frame is installed.



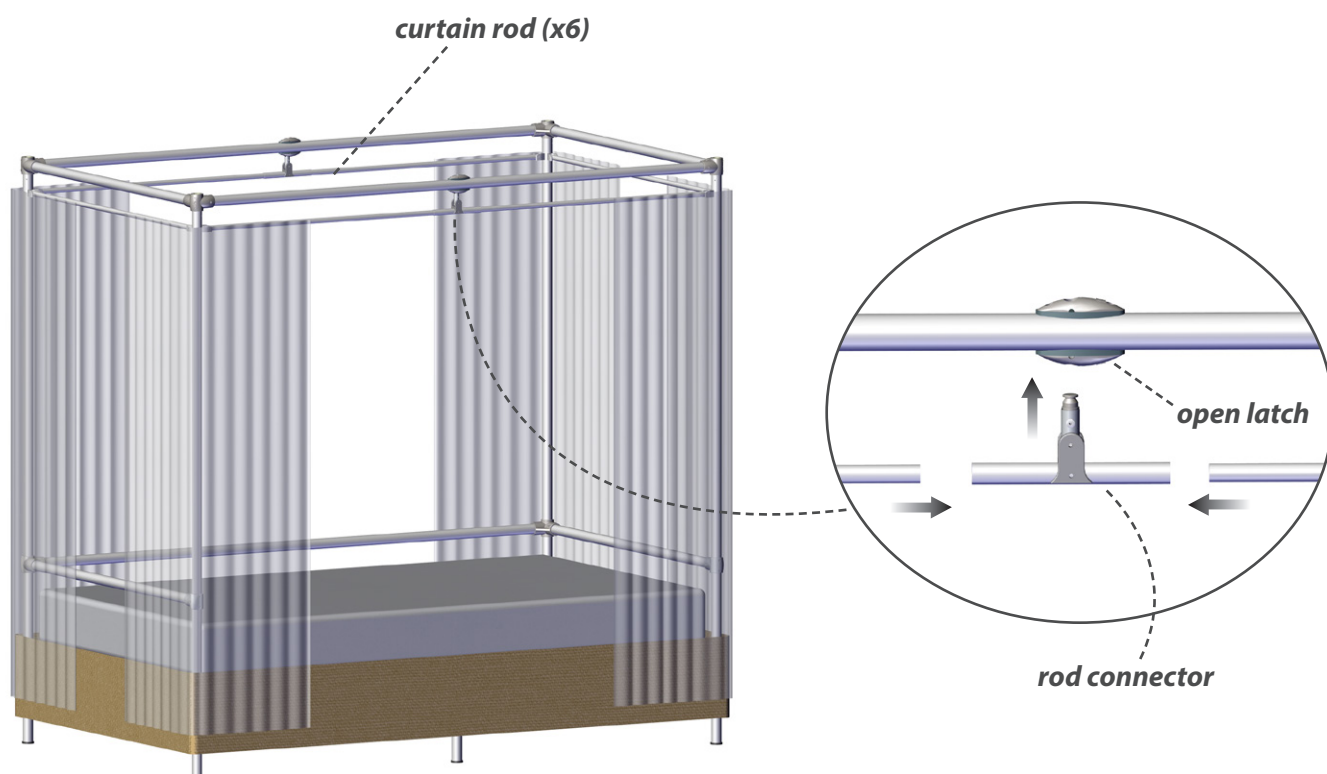
## Step 2

Insert crossbars inside elbows and tighten with set screws (all corners)



## Step 3

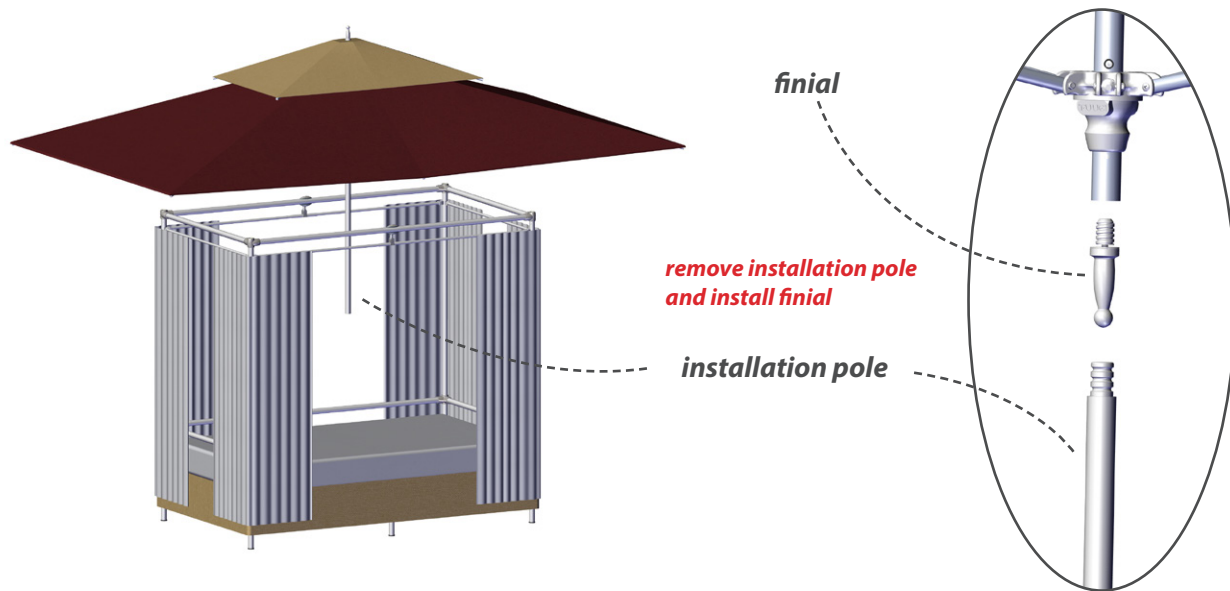
Insert curtains on curtain rods and hitch rod connector to latch bracket.



# Canopy Frame Installation

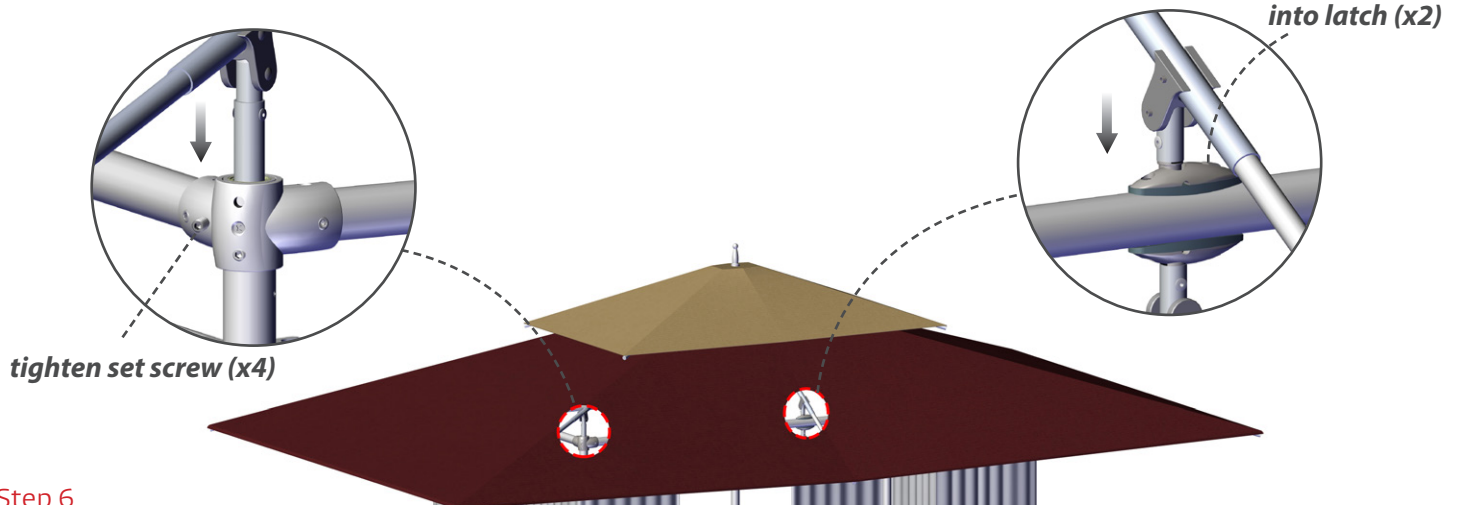
## Step 4

Use installation pole to drop canopy frame onto lower frame.  
Once the canopy has been installed, remove installation pole and install finial.



## Step 5

Drop-in connectors and adjust with bolts and screws.



## Step 6

Tighten all elbows corner screws

